



US00D456687S

(12) **United States Design Patent** (10) **Patent NO.:** **US D456,687 S**
Economos et al. (45) **Date of Patent:** **** May 7, 2002**

(54) **TOOL POD HOUSING**

(75) Inventors: **James J. Economos**, Kingston; **James O. Quinn**, Montgomery; **Walter A. Gardiner**, Waccabuc, all of NY (US)

(73) Assignee: **Imperial Schrade Corp.**, Ellenville, NY (US)

(**) Term: **14 Years**

5,442,529 A	811995 Hoover
D383,048 S *	911997 Sorensen et al. D8/105
D389,030 S *	111998 Wensley D8/107
5,857,268 A *	111999 Park
D410,189 S *	511999 Wehrs et al. D8/105
5,916,277 A	611999 Dallas
5,960,498 A	1011999 Nabors et al.
D421,373 S *	312000 Hollinger D8/43
6,038,723 A	312000 Nabors et al.
D446,709 S *	812001 Rivera D8/105

(21) Appl. No.: **291134,629**

(22) Filed: **Dec. 26, 2000**

(51) **LOC (7) Cl.** **08-05**

(52) **U.S. Cl.** **D8/105**

(58) **Field of Search** D8/14, 21, 26, D8/27, 28, 29, 40, 43, 45, 55, 81, 87, 105, 107; D10/62, 68; D32/40, 46, 49; 71105, 118, 143, 147, 155, 164, 167, 168, 169, 170; 151105, 121, 236.01, 236.03, 236.05, 236.07, 236.08, 236.09; 301143, 152, 153, 155, 161, 164; 331319, 354, 355 R; 81120, 21, 98, 99, 440, 490; 2061234, 803; 34618; 368110, 28, 29, 82, 83, 101, 239, 242, 276, 277, 278; 446128

(56) **References Cited**

U.S. PATENT DOCUMENTS

610,530 A *	911898 Hammesfahr 71155
755,172 A	311904 Ryan
899,408 A *	911908 Kampfe 301152
924,796 A *	611909 Klever 301152
D61,220 S	711922 Ochse
4,783,867 A	1111988 Tsao
D302,102 S	711989 Amagaya
D350,271 S	911994 Landy et al.

OTHER PUBLICATIONS

The Sharper Image Catalog, "Zytool", Aug. 2000, p. 3.
 "All Terrain Lighter", Colibri advertisement in Cigar Aficionado, Oct. 2000, p. 98.

* cited by examiner

Primary Examiner—Doris V. Coles
 Assistant Examiner—T. Chase Nelson
 (74) Attorney, Agent, or Firm—SAIDMAN DesignLaw Group

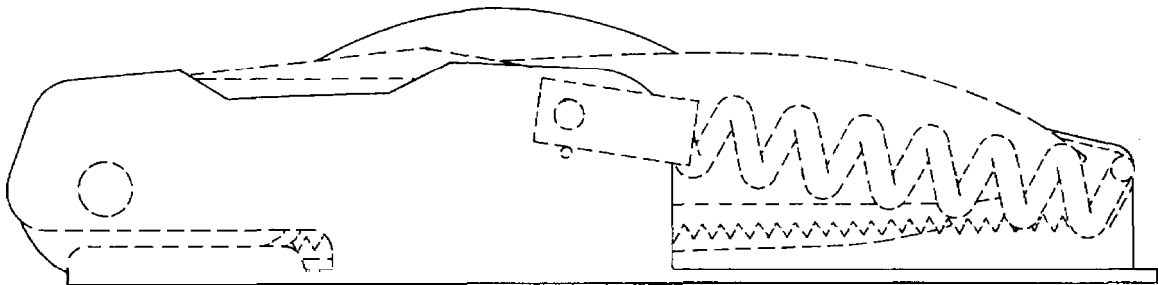
(57) **CLAIM**

The ornamental design for a tool pod housing, as shown.

DESCRIPTION

FIG. 1 is a front view of a tool pod housing showing our new design;
 FIG. 2 is a rear view thereof;
 FIG. 3 is a top view thereof;
 FIG. 4 is a bottom view thereof;
 FIG. 5 is a left side view thereof; and,
 FIG. 6 is a right side view thereof.
 The broken lines shown in the figures are for environmental purposes only and form no art of the claimed design.

1 Claim, 5 Drawing Sheets



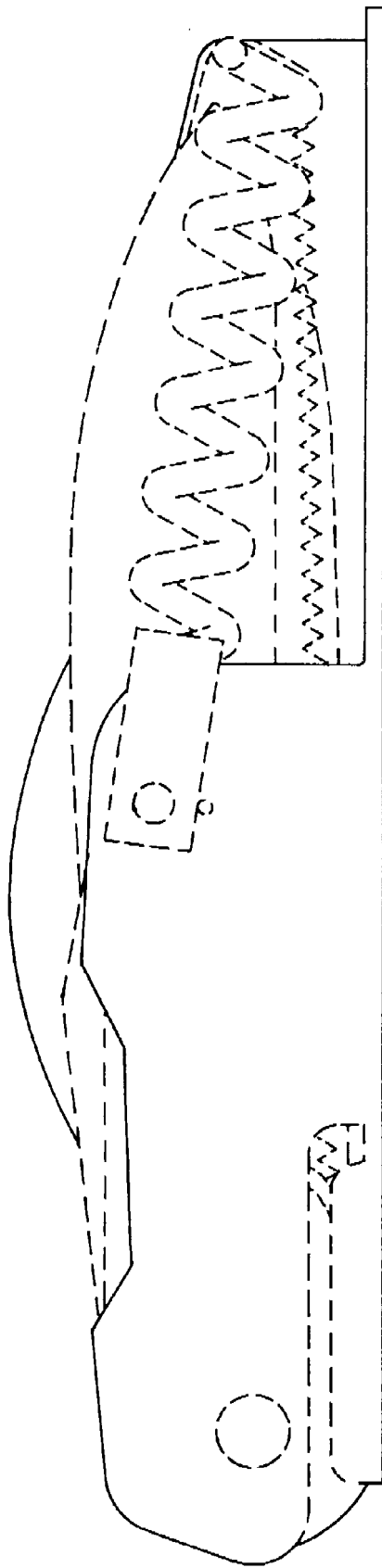


FIG.1

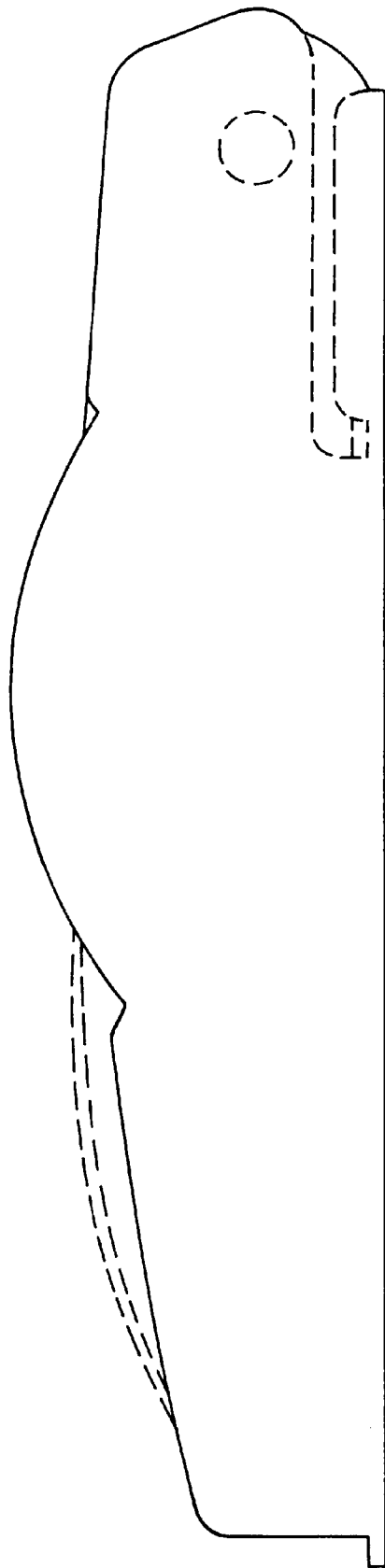


FIG.2

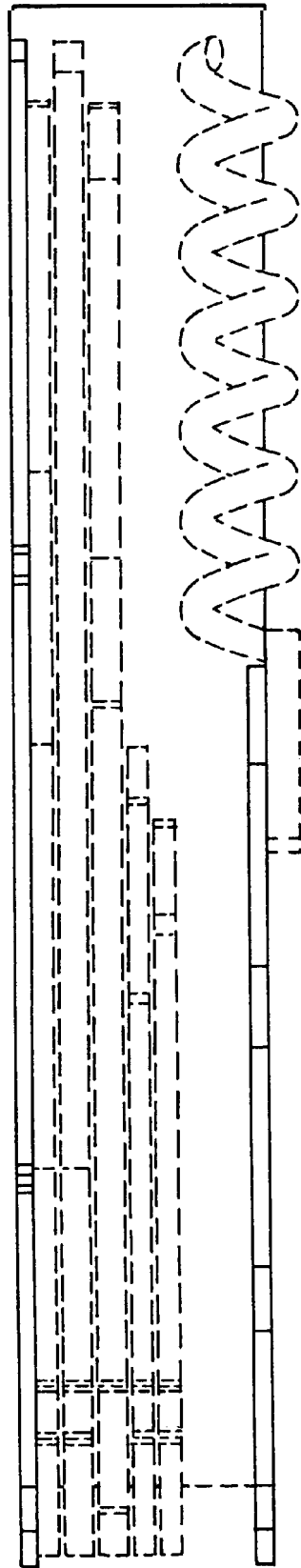


FIG.3

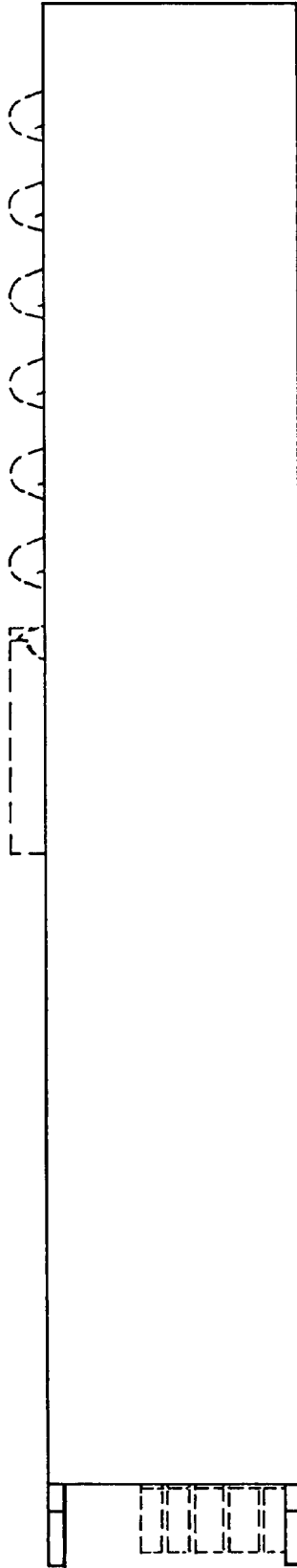


FIG.4

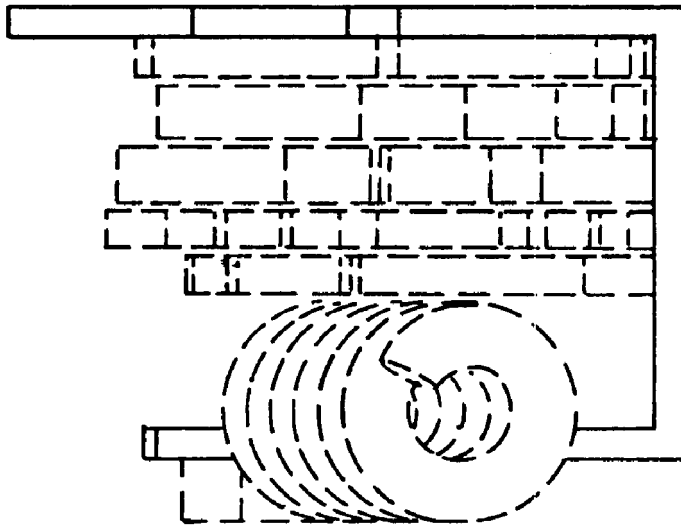


FIG. 5

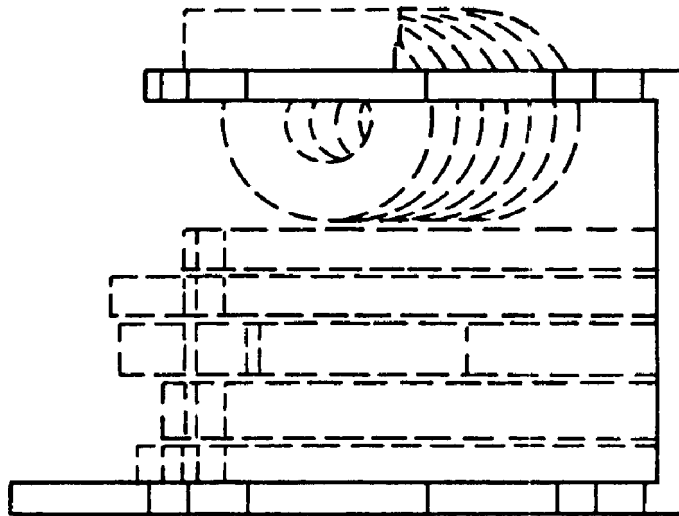


FIG. 6