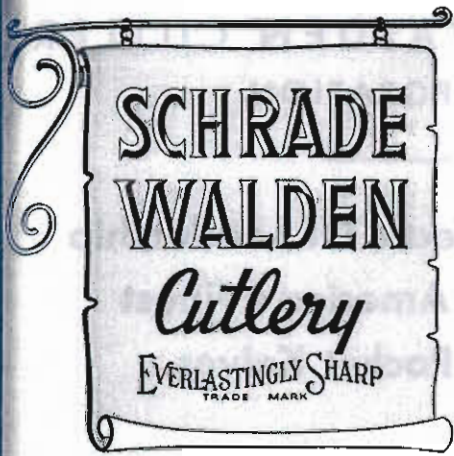


1947

# SCHRADE-WALDEN CUTLERY CORPORATION



## Over Forty Years Of Leadership Producing America's Finest Quality Pocket Knives.



No. 71083 $\frac{3}{4}$

Serpentine Pen Knife; 2 $\frac{3}{4}$  inches long; Bone Stag Handle; 2 Blades (Clip and Pen); Brass Linings; Nickel Silver Bolsters and Shield; Large Blade Polished on one side.

Weight Per Dozen, 10 oz.



No. 7934M

Slim Senator Pattern; 2 $\frac{1}{2}$  inches long; Solid Marine Pearl Handle; 2 Blades (Spear and Pen); Nickel Silver Linings; Large Blade Polished on one side.

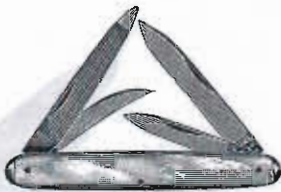
Weight Per Dozen, 7 oz.



No. M7703T

Senator Pattern; 2 $\frac{7}{8}$  inches long; Bone Stag Handle; 2 Blades (Spear and Flexible Nail File); Brass Linings; Nickel Silver Tips and Shield; Large Blade Polished on one side.

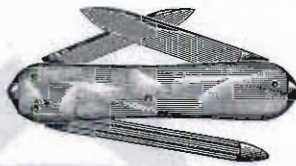
Weight Per Dozen, 9 oz.



No. 9706T

Senator Pattern; 2 $\frac{7}{8}$  inches long; Mother of Pearl Handle; 4 Blades (Spear, Pen, Flexible Manicure File and Surgical Lance Blade); Nickel Silver Linings Milled; Nickel Silver Tips; Blades Full Polished.

Weight Per Dozen, 12 oz.



No. 8654MT

Sunfish Lobster Pattern; 3 inches long; Marine Pearl Handle; 3 Blades (Spear, Pen and Long Nail File); Nickel Silver Tips; Brass Linings; Large Blade Polished on one side.

Weight Per Dozen, 13 oz.



No. 7424 $\frac{3}{4}$ YB

Senator Pattern; 3 $\frac{1}{8}$  inches long; Mottled Brown Horn Celluloid Handle; 2 Blades (Clip and Pen); Brass Linings; Nickel Silver Bolsters and Shield; Large Blade Polished on one side.

Weight Per Dozen, 14 oz.



No. 46

Senator Pattern; 2 $\frac{7}{8}$  inches long; Stainless Steel Engine Turned Handle; 4 Blades (Stainless Steel Spear, Stainless Steel Pen, Stainless Steel Lance Blade and Flexible Nail File); Blades Full Polished; Each Knife Packed with Leather Purse in Individual Box; with Shackle.

Weight Per Dozen, 1 lb., 9 oz.



No. 48

Senator Pattern; 3  $\frac{1}{16}$  inches long; Stainless Steel Engine Turned Handle; 1 Stainless Steel Spear Blade and Flexible Nail File; with Shackle; Large Blade Polished on one side; Each Knife Packed with Leather Purse in Individual Box.

No. 148 - Same without Shackle.

Weight Per Dozen, 1 lb., 2 oz.



No. 146

Senator Pattern; 2 $\frac{7}{8}$  inches long; Stainless Steel Engine Turned Handle; 4 Blades (Stainless Steel Spear, Stainless Steel Pen, Stainless Steel Lance Blade and Flexible Nail File); Blades Full Polished; Each Knife Packed with Leather Purse in Individual Box; without Shackle.

Weight Per Dozen, 1 lb., 9 oz.

Packed half dozen in a box, except as noted.

Illustrations are one-half size.



SCHRADE - WALDEN CUTLERY  
CORPORATION

SCHRADE  
WALDEN  
Cutlery  
EVERLASTINGLY SHARP  
TRADE MARK

Over Forty Years Of Leadership  
Producing America's Finest  
Quality Pocket Knives.



No. 2725 $\frac{1}{4}$

Serpentine Jack Knife; 2 $\frac{7}{8}$  inches long; Staggered Handle; 2 Blades (Clip and Pen); Brass Linings; Nickel Silver Bolsters and Caps; Large Blade Polished on one side.  
Weight Per Dozen, 15 oz.



No. R7664 $\frac{1}{4}$ B

Wharnclyff Pattern; 3  $\frac{1}{16}$  inches long; Black Celluloid Handle; 2 Blades (Clip and Pen); Brass Linings; Nickel Silver Bolsters and Shield; Large Blade Polished on one side.  
Weight Per Dozen, 11 oz.



No. 7743

Congress Pattern; 3 inches long; Bone Stag Handle; 2 Blades (Sheepfoot and Pen); Brass Linings; Nickel Silver Bolsters; Large Blade Polished on one side.  
Weight Per Dozen, 11 oz.



No. 2954 $\frac{3}{4}$ K

Serpentine Jack Knife; 3 inches long; K-Horn Celluloid Handle; 2 Blades (Clip and Pen); Brass Linings; Nickel Silver Bolsters, Caps and Shield; Large Blade Polished on one side.  
Weight Per Dozen, 1 lb., 4 oz.



No. 9743

Congress Pattern; 3 inches long; Bone Stag Handle; 4 Blades (2 Sheepfoot Blades and 2 Pen Blades); Brass Linings; Nickel Silver Bolsters; Large Blade Polished on one side.  
Weight Per Dozen, 1 lb., 1 oz.



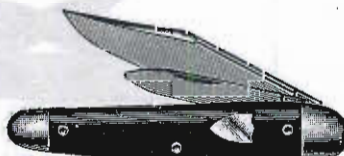
No. 2423

Equal End Jack Knife, Slim Pattern; 3 $\frac{1}{8}$  inches long; Bone Stag Handle; 2 Blades (Spear and Pen); Brass Linings; Nickel Silver Bolsters and Shield; Large Blade Polished on one side.  
Weight Per Dozen, 1 lb., 3 oz.



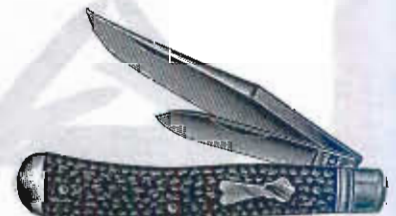
No. 2344K

Serpentine Jack Knife; 3  $\frac{5}{16}$  inches long; K-Horn Celluloid Handle; 2 Blades (Clip and Pen); Brass Linings; Nickel Silver Bolsters and Shield; Large Blade Polished on one side.  
Weight Per Dozen, 1 lb., 4 oz.



No. 2364 $\frac{3}{4}$ B

Serpentine Jack Knife; 3  $\frac{9}{16}$  inches long; Black Celluloid Handle; 2 Blades (Clip and Pen); Brass Linings; Nickel Silver Bolsters and Shields; Large Blade Polished on one side.  
Weight Per Dozen, 1 lb., 8 oz.



No. 2943 $\frac{3}{4}$

Serpentine Jack Knife; 3 $\frac{3}{8}$  inches long; Bone Stag Handle; 2 Blades (Half Sabre Clip and Pen); Brass Linings; Nickel Silver Bolsters, Caps and Shield; Large Blade Polished on one side.  
Weight Per Dozen, 2 lbs., 5 oz.



1947

# SCHRADE - WALDEN CUTLERY CORPORATION



## Over Forty Years Of Leadership Producing America's Finest Quality Pocket Knives.



No. 200

Smokers' Knife, Senator Pattern, 3 inches long; Dual Nickel Silver Handle; 2 Blades (Spear Pocket Blade and Piercer - for piercing cigars or cleaning pipe); Nickel Silver Tamper on end; Blade Polished on one side. Each knife packed with flannel purse in individual box.

Weight Per Dozen, 1 lb., 4 oz.

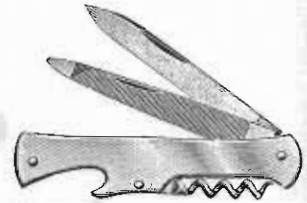


No. 204

(Old No. C2041SD)

Electrician's Knife (Lock-back), 3 3/4 inches long; Cocobola Handle; 2 Blades (Spear Blade and Screwdriver - wire scrapper Blade); Center Lock; Brass Linings; Nickel Silver Bolsters and Shield; Large Blade Polished on one side.

Weight Per Dozen, 3 lbs., 0 oz.



No. 812

Champagne Jr. Knife, 3 inches long; Nickel Silver Handle; 3 Blades (Spear Blade, Flexible Manicure File and Corkscrew); Caplift Formed by Springs and Handle; Spear Blade Polished on one side. Each knife packed with flannel purse in individual box.

Weight Per Dozen, 1 lb., 10 oz.

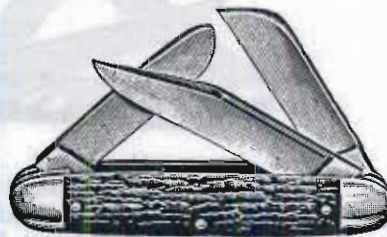


No. 834

(Old No. 8343)

Serpentine Knife, 3 5/16 inches long; Bone Stag Handle; 3 Blades (Clip, Spey and Pen); Brass Linings; Nickel Silver Bolsters and Shield; Large Blade Polished on one side.

Weight Per Dozen, 1 lb., 4 oz.

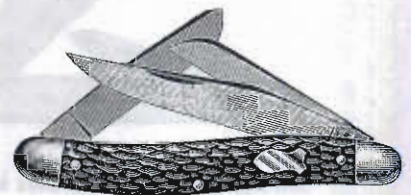


No. 856

(Old No. S8563 3/4)

Cattle Knife, 3 3/8 inches long; Bone Stag Handle; 3 Blades (Clip, Sheepfoot and Spey); Brass Linings; Nickel Silver Bolsters; Large Blade Polished on one side.

Weight Per Dozen, 2 lbs., 0 oz.



No. 861

(Old No. 8613)

Slim Premium Stock Knife, 4 inches long; Bone Stag Handle; 3 Blades (Turkish Clip, Sheepfoot and Spey); Nickel Silver Linings, Bolsters and Shield; Milled Back; Large Blade Polished on one side.

Weight Per Dozen, 1 lb., 10 oz.

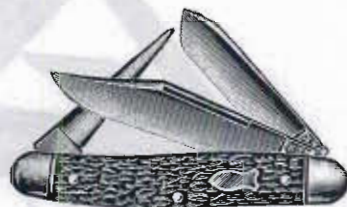


No. 890

(Old No. 8903)

Premium Stock Knife, 3 1/2 inches long; Bone Stag Handle; 3 Blades (Clip, Sheepfoot and Spey); Brass Linings; Nickel Silver Bolsters and Shield; Large Blade Polished on one side.

Weight Per Dozen, 1 lb., 12 oz.



No. 891

(Old No. 8913)

Premium Stock Knife, 3 1/2 inches long; Bone Stag Handle; 3 Blades (Clip, Spey and Leather Punch); Brass Linings; Nickel Silver Bolsters and Shield; Large Blade Polished on one side.

Weight Per Dozen, 1 lb., 12 oz.



No. 899

(Old No. 8993 1/4)

Slim Premium Stock Knife, 3 9/16 inches long; Bone Stag Handle; 3 Blades (Turkish Clip, Spey and Leather Punch); Brass Linings; Nickel Silver Bolsters and Shield; Large Blade Polished on one side.

Weight Per Dozen, 1 lb., 12 oz.



SCHRADE - WALDEN CUTLERY  
CORPORATION

SCHRADE  
WALDEN

Cutlery

EVERLASTINGLY SHARP  
TRADE MARK

Over Forty Years Of Leadership  
Producing America's Finest  
Quality Pocket Knives.



No. 8

Serpentine Pattern; 2 3/4 in. long; Staggered Handle; 3 Blades (Clip, Sheepfoot and Pen); Brass Linings, Nickel Silver Bolsters and Shield; Milled Backs; Large Blade Polished on one side; Each Knife Packed with Leather Purse in Individual Box.

Weight Per Dozen, 1 lb., 3 oz.



No. 8103

Senator Pattern; 3 1/8 inches long; Bone Stag Handle; 3 Blades (Spear, Sheepfoot and Pen); Brass Linings; Nickel Silver Bolsters and Shield; Large Blade Polished on one side.

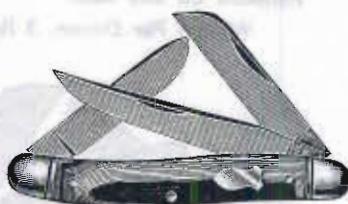
Weight Per Dozen, 1 lb., 4 oz.



No. M8424MT

Senator Pattern; 3 1/8 inches long; Marine Pearl Handle; 3 Blades (Spear, Pen and Long Flexible Nail File); Brass Linings; Nickel Silver Tips and Shield; Large Blade Polished on one side.

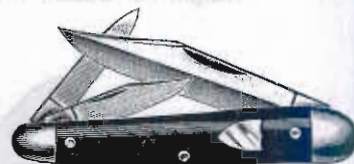
Weight Per Dozen, 1 lb., 1 oz.



No. 8964K

Slim Premium Stock Knife; 3 9/16 inches long; K-Horn Celluloid Handle; 3 Blades (Clip, Sheepfoot and Spey); Brass Linings; Nickel Silver Bolsters and Shield; Large Blade Polished on one side.

Weight Per Dozen, 1 lb., 8 oz.



No. 8364 3/8 B

Serpentine Pen Knife; 3 9/16 inches long; Black Celluloid Handle; 3 Blades (Large Sabre Clip, Small Clip and Pen); Brass Linings; Nickel Silver Bolsters and Shield; Blades Full Polished.

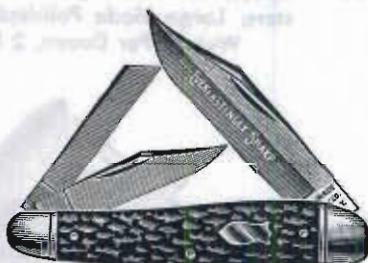
Weight Per Dozen, 1 lb., 10 oz.



No. R8833

Premium Stock Knife; 4 inches long; Bone Stag Handle; 3 Blades (Clip, Spey and Punch); Brass Linings; Nickel Silver Bolsters and Shield; Large Blade Polished on one side.

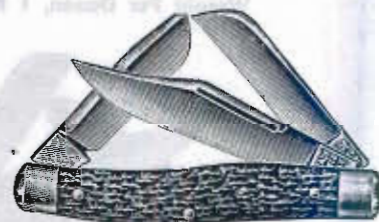
Weight Per Dozen, 2 lbs., 4 oz.



No. 4

Mechanics Knife; 3 3/8 in. long; Staggered Handle; 3 Blades (Large Sabre Clip, Small Clip, and Coping Pen); Brass Linings; Nickel Silver Bolsters and Shield; Large Blade Polished on one side; Individually Packed with Leather Purse.

Weight Per Dozen, 2 lbs., 13 oz.



No. 8815

Premium Stock Knife, Texas Pattern; 4 in. long; Staggered Handle; 3 Blades (Clip, Sheepfoot and Spey); Brass Linings; Nickel Silver Bolsters; Large Blade Polished on one side.

Weight Per Dozen, 2 lbs., 6 oz.

Packed half dozen in a box, except as noted.

Illustrations are one-half size.



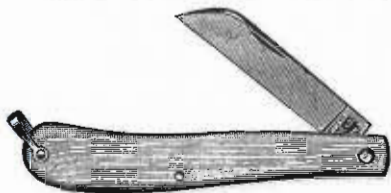
1947

# SCHRADE - WALDEN CUTLERY CORPORATION

## HORTICULTURAL KNIVES

No. 1694B

Budding Knife with Stationary Genuine Ivory Budder; 4 7/8 inches long over all; Handle 3 1/8 inches long; 1 Budding Blade; Brass Lined; Nickle Silver Bolsters; Glaze-Finished Blade; Black Celluloid Handle.  
Weight Per Dozen, 1 lb., 3 oz.



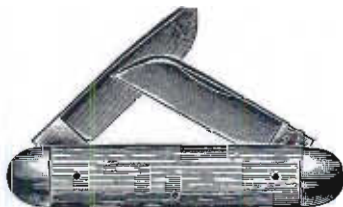
No. S1944 1/2 WPH

Florists' Grafting Knife with Shackle; 3 3/8 inches long; 1 Grafting Blade; Brass Linings; Nickle Silver Shackle; Glaze-Finished Blade; Ivory Celluloid Handle.

No. S1944 WPH

Same as above except with Budding Blade.

Weight Per Dozen, 1 lb., 5 oz.



No. 7164 1/2 WPH

Budding and Grafting Knife; 3 3/8 inches long; 2 Blades (Budding Blade and Grafting Blade); Brass Linings; Nickle Silver Bolsters; Glaze-Finished Blades; Ivory Celluloid Handle.

Weight Per Dozen, 1 lb., 14 oz.



No. S1944 3/4 WPH

Florists' Pruning Knife with Shackle; 3 3/8 inches long; 1 Light Pruning Blade; Brass Linings; Nickle Silver Shackle; Glaze-Finished Blade; Ivory Celluloid Handle; No Imprinting. Imprinting similar to illustration furnished at extra cost.

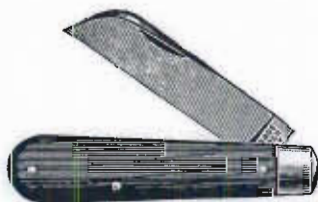
Weight Per Dozen, 1 lb., 5 oz.



No. 7303

Budding and Pruning Knife; 4 1/8 inches long; 2 Blades (Budding Blade and Pruning Blade); Brass Linings; Steel Bolsters; Nickle Silver Shield; Glaze-Finished Blades; Bone Stag Handle.

Weight Per Dozen, 2 lbs., 4 oz.



No. B1151 1/2

Grafting Knife; 3 3/8 inches long; 1 Grafting Blade; Brass Linings; Steel Bolsters; Glaze-Finished Blade; Cocobola Handle.

No. B1154 1/2 W

Same as above, but with White Celluloid Handle.

Weight Per Dozen, 1 lb., 10 oz.



No. 1361

Large Pruning Knife; 4 7/16 inches long; 1 Large Pruning Blade; Steel Linings; Steel Bolsters; Glaze-Finished Blade; Cocobola Handle.

Weight Per Dozen, 3 lbs., 2 oz.

### The Schrade Blade with the Flat Side for more expert work in Budding and Grafting

These blades are forged from the finest crucible cutlery steel, are given a special temper and instead of having both sides bevelled as is usual, they have one side ground perfectly flat. They possess a remarkably keen cutting edge and the flat side is exactly in line with the direction

one naturally takes when cutting and the result is a beautifully flat and undamaged surface to every cut. With the new SCHRADE Flat-Sided Blades you can bud or graft more successfully and obtain more "TAKES" due to the perfect joint between scion and stock.

No. 1354 1/2 B



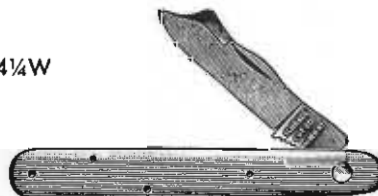
Grafting Knife; 4 inches long; Flat Side Blade; Thick Brass Lining; Cleaned Inside; Glaze-Finished Blade; Black Celluloid Handle.

No. 1354 1/2 W

Same as above, but with White Celluloid Handle.

Weight Per Dozen, 1 lb., 12 oz.

No. 1354 1/4 W



Budding Knife; 4 inches long; Flat Sided Blade with Bark Loosener on Back; Thick Brass Linings; Cleaned Inside; Glaze-Finished Blade; White Celluloid Handle.

No. 1354 1/4 B

Same as above, but with Black Celluloid Handle.

Weight Per Dozen, 1 lb., 12 oz.

Illustrations are one-half size.